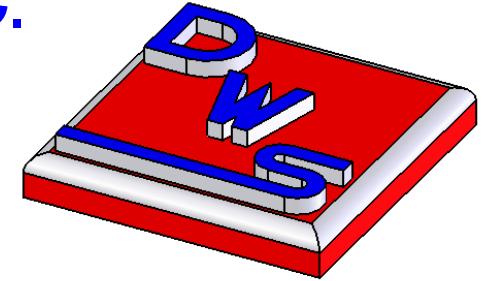


Tool & Die Consultant
 Stamping Consultant
 Sheet Metal Consultant

INDUSTRY BACKGROUND			
ZONE	REV.	TOOL & DIE JOURNEYMAN CHIEF TOOL & DIE ENGINEER 30 YEARS IN THE METAL FORMING & PRECISION STAMPING INDUSTRY	APPROVED

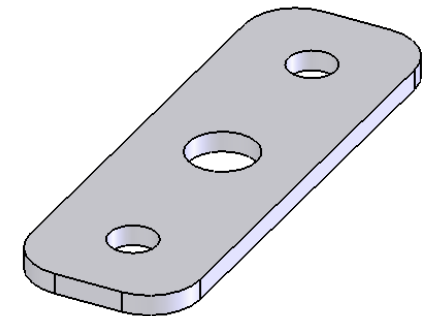
DESIGN WORK SOLUTIONS, L.L.C.

DESIGN FOR THE FUTURE



MANUFACTURING SOLUTIONS
 2d & 3d DESIGN & MODELING
 TOOL & DIE ENGINEERING

3d Design - SolidWorks - Modeling
 2d Design - Expert CAD - Design



PROPRIETARY AND CONFIDENTIAL
 THE INFORMATION CONTAINED IN THIS DRAWING IS THE SOLE PROPERTY OF DESIGN WORK SOLUTIONS, L.L.C.. ANY REPRODUCTION IN PART OR AS A WHOLE WITHOUT THE WRITTEN PERMISSION OF DESIGN WORK SOLUTIONS, L.L.C. IS PROHIBITED.

Part Modeling Tool & Die Design Tool & Fixture Design Gauge Design Reverse Engineering PDF Documents CAD/CAM File Formats	UNLESS OTHERWISE SPECIFIED:		NAME	DATE	TITLE: DAVID W. SPALL 1534 CLIPPER COVE PAINESVILLE TWP, OHIO 44077 HOME - 440-357-6321 CELL - 440-637-4559 FAX - 440-357-5191 WEB - www.dwsllc.org davidspall@sbcglobal.net
	DIMENSIONS ARE IN INCHES TOLERANCES: FRACTIONAL ± ANGULAR: MACH ± BEND ± TWO PLACE DECIMAL ± THREE PLACE DECIMAL ±		DRAWN	DWS 11/9/06	
	INTERPRET GEOMETRIC TOLERANCING PER:		CHECKED		
	MATERIAL		ENG APPR.		
NEXT ASSY	USED ON	FINISH	MFG APPR.		Q.A.
APPLICATION		DO NOT SCALE DRAWING	CONTRACT REVIEWS		SIZE DWG. NO. REV A BROCHURE 2
			CALL FOR A CONSULTANT REVIEW ON YOUR NEXT ENGINEERING PROJECT		SCALE: 1:1 WEIGHT: SHEET 1 OF 1